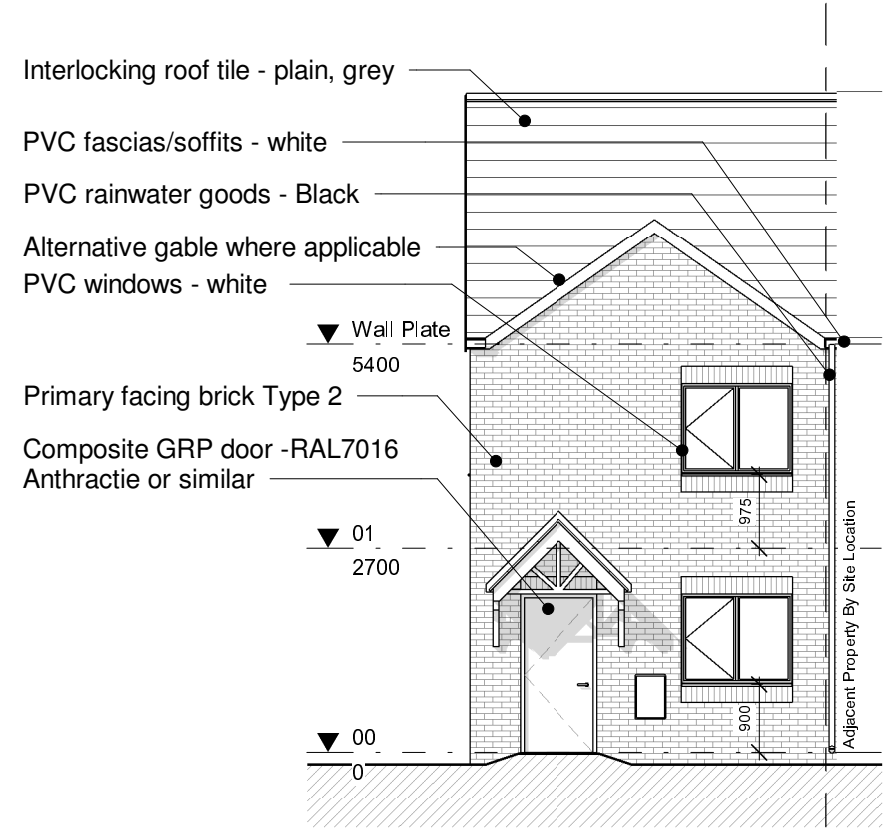
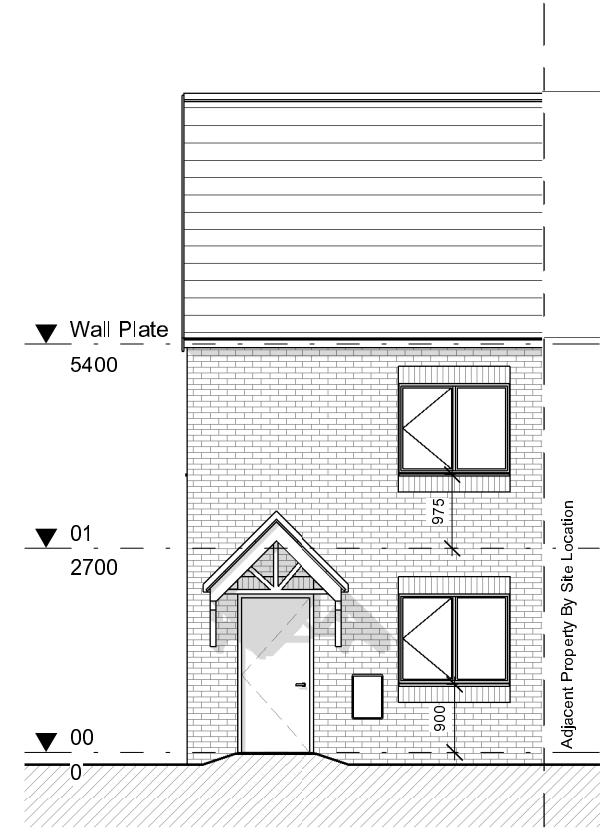


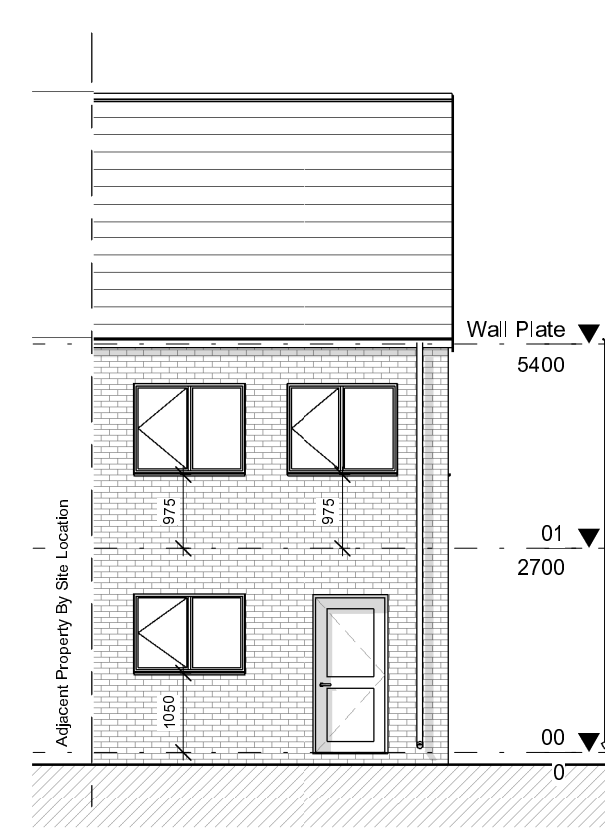
Do not scale from this drawing.
 The contractor is to check all dimensions on site and report any discrepancies to MHA.
 © 2021 Michael Hyde and Associates. All rights reserved. This drawing has been produced for Keon Homes for Newcomen Way and is not intended for use by any other person or any other purpose.
 MHA Architects is a trading name of Michael Hyde and Associates, a limited company registered in England and Wales under company number 1178091 whose registered office is at Suite 1B Origin, 70 Spring Gardens, Manchester, M2 2BQ.



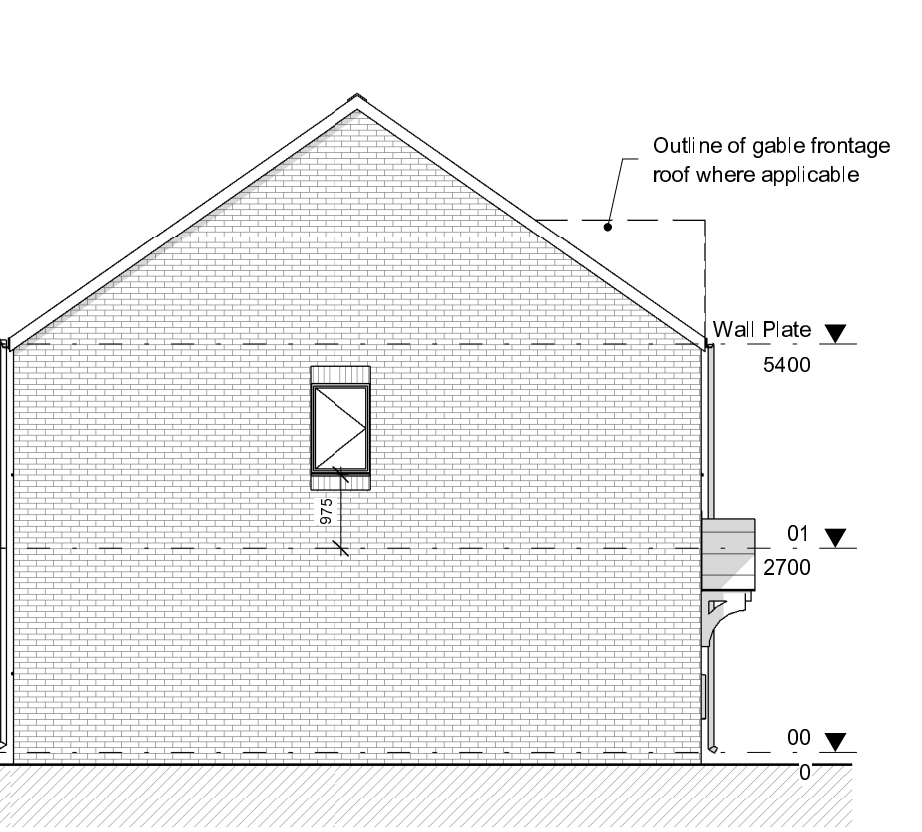
Gable Front Variation



Front GA Elevation



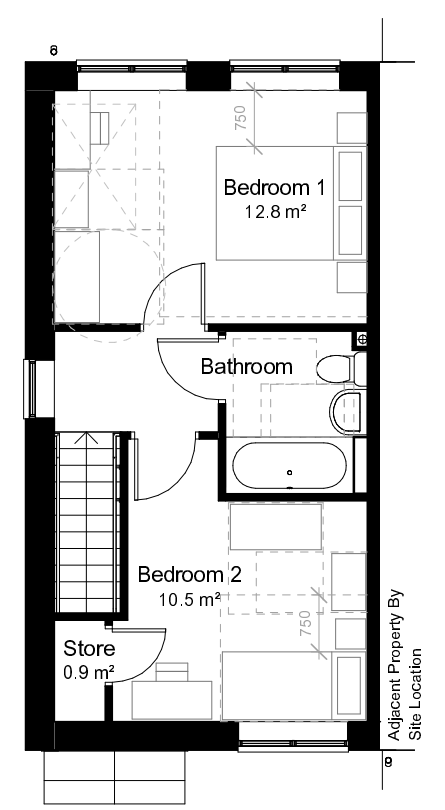
Rear GA Elevation



Left GA Elevation



Level 00 - GA Plan



Level 01 - GA Plan

2 Bed / 3 Person Semi-detached

Gross Internal Area		Gross External Area	
Level	Area	Level	Area
00	35.1 m ²	00	44.6 m ²
01	35.1 m ²	01	44.6 m ²
Total GIA	70.2 m ²	Total GEA	89.2 m ²

P1	2021-02-09	Initial Issue	PC	GR
REV	DATE	DESCRIPTION	DRN	CHK

CLIENT
 Keon Homes

PROJECT TITLE
 Newcomen Way
 Telford-Phase 2

TITLE
 House Type B

SUITABILITY
 Suitable For Information

DRAWN / CHECKED	INITIAL ISSUE DATE	SCALE
GR / PC	Feb 2021	1 : 100 @ A3

DRAWING ID								
Project	Originator	Volume	Level	Type	Role	Number	Status	Revision
3KE3	MHA	B	XX	DR	A	00001	S2	P1